

Passion



Communion

Wheat and grapes represent the elements in the sacrament of Holy Communion. (*Matthew 26:26-30*)

The Servant

The pitcher, basin and towel are symbols for Christ's washing of the disciples' feet. (*John 13:1-17*)



Christ's Agony

in the Garden of Gethsemane. "Father, if it be possible, let his cup pass from me. Nevertheless, not my will, but thine be done." (*Luke 22:39-46*)



Arrest

The lantern represents Christ's arrest in the night.

Denial

The Rooster tells of Jesus' prediction of Peter's denial. (*Luke 22:31-62*)

Crucifixion

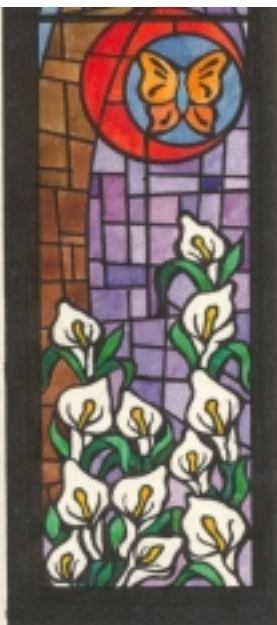
The crown of thorns and the three spikes were parts of the cruxifixion. (*Matthew 27:29*)



Christ on the Cross



The Three Crosses on the Hill



The Resurrection

The butterfly and lillies symbolize the resurrection.